



Power of the Pen

Do you know how to program your pen? Here are step-by-step instructions for Photoshop.

BY BILL LINDSAY

Pen Power

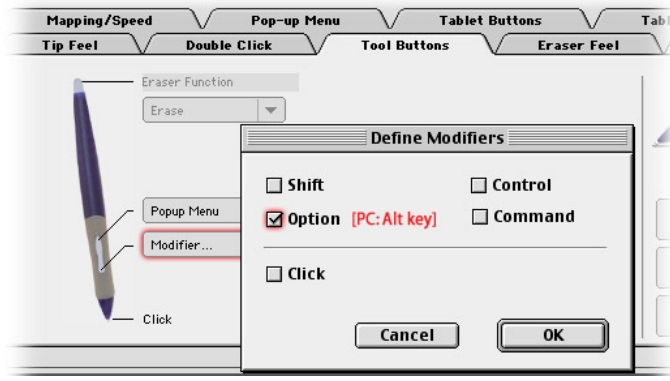
When I'm speaking or at an event, people ask how to set up their Pens for Photoshop. I'll walk you through how to do this, plus there is the added bonus that once you understand how to do this, you can apply the same power to any of your applications. Please allow me to re-state that... ANY of your applications.

Start by launching the Wacom Tablet control panel (on both platforms, Mac & Windows, it's located in your Control Panels). If you've never launched it before, tap on the "OK" button to get past the Getting Started screen.

to your pen. For our example, assign the front button to be the Option Key [PC: Alt key]. You can do this by tapping and holding down on the button titled "Double-Click" and selecting "Modifier..." from the pop-up menu. Check off the Option Key [PC: Alt key] and close the box by tapping on "OK".

(Look at the bottom right of this page for some examples of tools, menus and actions. Since Actions can be assigned an F-key, they can be added to your list as well.) Repeat this step for each shortcut you want to add.

STEP ONE: Tap on the button titled "Add Application To List..." If you have Photoshop running, you will see it in the "Currently running applications" box and select it. Otherwise tap on the Browse button and find your version of Photoshop, tap on "OK" and make sure your pen is selected as the tool to be customized for Photoshop. Tap on "OK" again.



FINAL STEP: Quit the control panel [PC: Tap on "Apply" before exiting] and return to Photoshop.

Your pen is now set. Press the back button on your pen to see your new list appear. Press the front button any time you would have otherwise pressed the Option Key [PC: Alt key]. Experiment with the Tool Button options to find what works best for you. Remember, now apply

STEP TWO: Select the Photoshop icon on the "Applications with customized tool settings" list (first row of icons) and then select the Pen you want to customize (second row of icons).

STEP FIVE: For the back button on the Duo Switch, tap and hold down on the button titled "Modifier..." and select "Pop-up Menu" from this list.

this technique to ANY application! ■

STEP THREE: Select the "Tool Buttons" tab. You will see a picture of your pen with all of the options available for it.



STEP SIX: Select the "Pop-up Menu" tab from the Wacom Control Panel. (The TAB, not the BUTTON.)

STEP FOUR: The key is to place your most popular keystrokes into your pen. Looking at your pen, (or the picture of it), you will notice that there is two buttons on a rocking switch (Wacom calls this the Duo Switch). Since many things in Photoshop have a keyboard equivalent, (tools, menus, actions and palettes) there are lots of choices for you to add

STEP SEVEN: Add your favorite or most used keyboard shortcuts to your new pop-up list. To do this, tap on the "Add Keystroke..." button. Type the keyboard shortcut from Photoshop, tap on "OK" and name your keystroke.

